

Landscape Requirements

Zoning T
Lot area = 309,276 sf (7.1 AC)
VUA = 61,263 sf

Description	Application	Calculation	Qty. Required	Qty. Provided
Site Trees	2 tree/ 2000 sf	309,276 sf/ 2000 x 2	310	157 **
Site Shrubs	5 shrubs/ 2000 sf	309,276 sf/ 2000 x 5	773	1654
VUA Buffers				
North	1 tree/ 40 LF + hedge	663.7/40 =	16	16
South	1 tree/ 40 LF + hedge	818.5/40 =	21	21
West	1 tree/ 40 LF + hedge	330.17/40 =	9	9
Sec 155.5203 D.5*	13'-17" landscape between buildings and VUA	Building A 370' x 13 = 4810 sf Building B 315' x 17 = 5355 sf Building C 244' x 17 = 4248 sf Building D 290' x 13 = 3770 sf Building E 290' x 13 = 3770 sf Building F 230' x 13 = 2990 sf	2800 sf 3330 sf 1776 sf 3520 sf 2320 sf 1720 sf	
Interior Landscape	15% of VUA	61,263 sf (.15) =	9190 sf	18,320 sf
Total Trees			356	203
Native trees	50% of required trees	356 (.50)	178	175

*Sec 155.5203.D.5 Landscape between VUA and Building

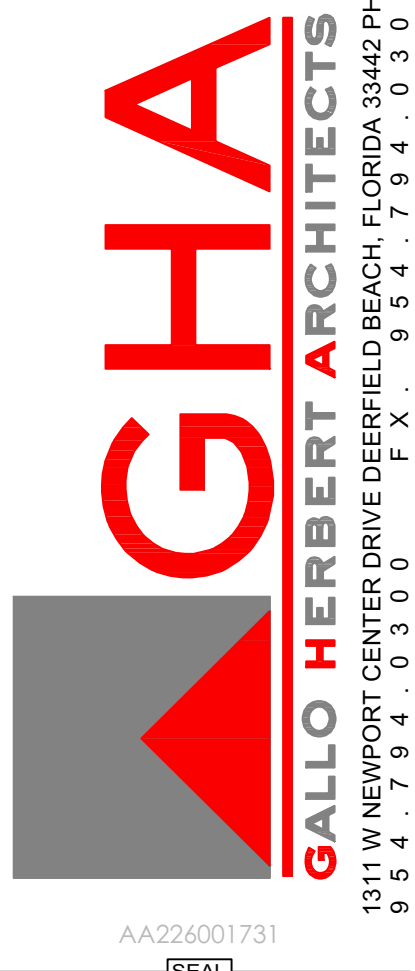
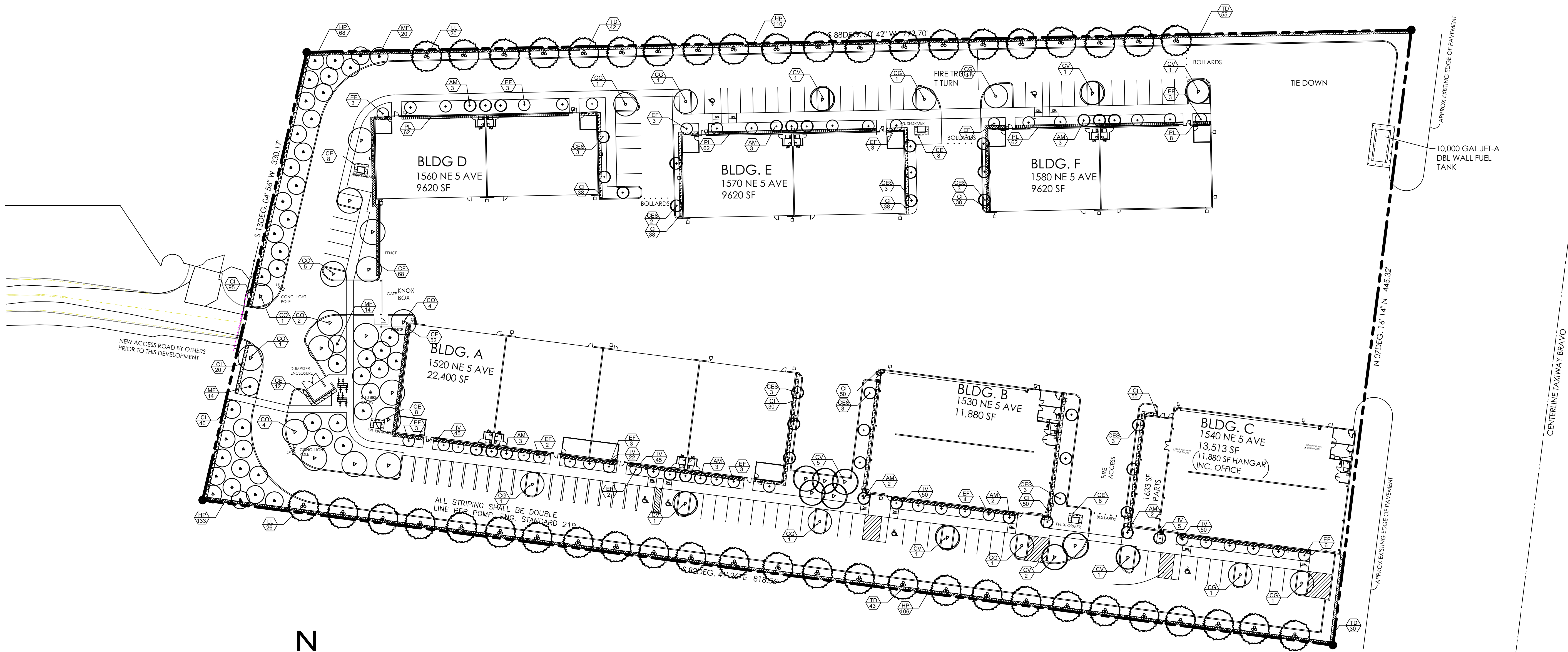
All buildings have a minimum of 55% (with the exception of Building C has 43%) of the required landscape area between VUA and buildings. See calculations per building in code chart. A superior landscape providing continuous shrubs along building foundation in these areas with trees and palms spaced 20' OC along buildings fronting VUA has been provided to mitigate the shortage in the landscape area between VUA and buildings.

** Site Trees

Site is short 153 trees. Developer shall mitigate these trees with payment into Pompano Tree Trust Fund.

Plant List

Sym	Qty	Botanical Name	Common Name	Size	Native	Drought Tolerance
Trees/ Palms						
CG	9	Caesalpinia granadillo	Bridalveil	12' Ht x 4' Spr, 2" cal	No	High
CES	23	Conocarpus erectus sericeus	Silver Buttonwood	10' Ht x 4' Spr, 2" cal, single trunk	Yes	High
MF	48	Myrcianthes fragrans	Simpson's Stopper	12' Ht. x 5' Spr., 2" cal.	Yes	High
EF	41	Eugenia foetida	Spanish Stopper	10' Ht x 4' Spr., 2" cal.	Yes	High
CO	17	Conocarpus erectus	Green Buttonwood	12' Ht. x 4' Spr., 2" cal.	Yes	High
LL	46	Lysiloma latisiliquum	Wild Tamarind	12' Ht x 4' Spr, 2" cal	Yes	High
CV	13	Callistemon viminalis	Weeping Bottlebrush	10' Ht x 4' Spr, 2" cal, single trunk	No	Medium
AM	19	Adonia merrillii	Christmas Palm	8' OA Ht, double trunk	No	Medium
Shrubs/Groundcovers						
CI	492	Chrysobalanus icaco	Cocoplum	24" x 24", 24" O.C.	Yes	Medium
CF	120	Clusia flava	Small Leaf Clusia	24" x 24", 24" O.C.	No	High
IV	217	Ilex vomitoria 'Stokes Dwarf'	Dwarf Ilex	10" x 10", 18" O.C.	Yes	High
PL	194	Psychotria ligustrifolia	Dwarf Wild Coffee	24" x 24", 24" O.C.	Yes	High
CE	44	Conocarpus erectus	Green Buttonwood	24" x 24", 24" O.C.	Yes	High
HP	417	Hamelia patens 'Compacta'	Dwarf Firebush	24" x 24", 36" O.C.	Yes	High
TD	170	Tripsacum dactyloides	Fakahatchee Grass	24" x 24", 36" O.C.	Yes	High
Sod			St. Augustine			
Mulch			Shredded Melaleuca or Eucalyptus			



Kimberly Moyer
Digitally signed by Kimberly Moyer
Date: 2022.06.27 16:00:36 -04'00'
Kimberly Moyer, RLA
Landscape Architecture
(954) 592-3695
k.moyerla@gmail.com
Lic. No. #LA0000952

POMPANO BEACH AIR PARK PARCEL Y

601 NE 10TH ST.
POMPANO BEACH
FL 33060

POMPANO BEACH

COMPANY NAME		
REVISIONS		
No.	Description	Date

PROJECT STATUS
DATE 06-30-2022
PROJECT NUMBER 83-2020
SCALE AS SHOWN
DRAWN BY JG
CHECKED BY
DRAWING TITLE

DRC
PZ22-12000020
8/3/2022